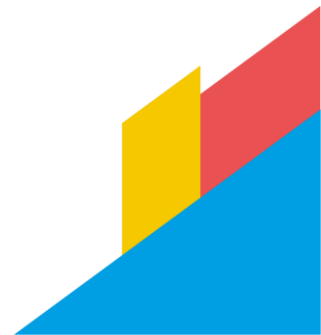
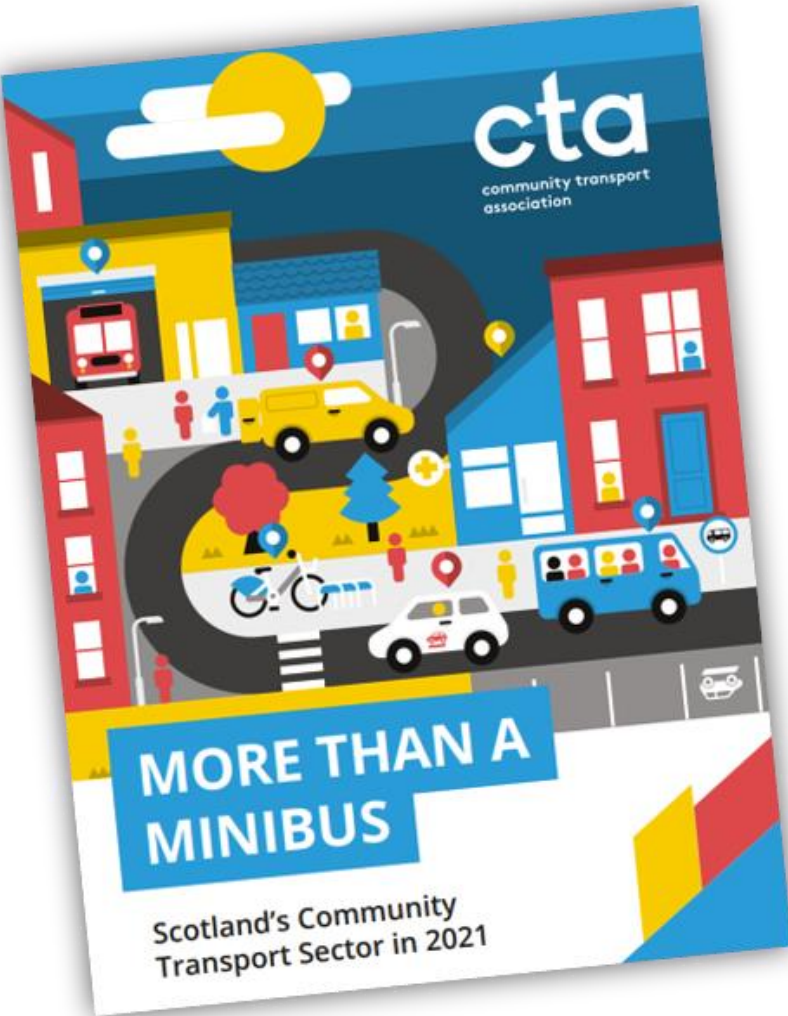


Mapping Scotland 2.0

**Lara Henderson – Development Officer for
Scotland, CTA**



More than a Minibus: Recap!



This screenshot shows the CTA website interface. On the left, there is a sidebar with a search bar and a list of filters. The main content area displays a map of Scotland with numerous blue location pins. The sidebar includes the following sections:

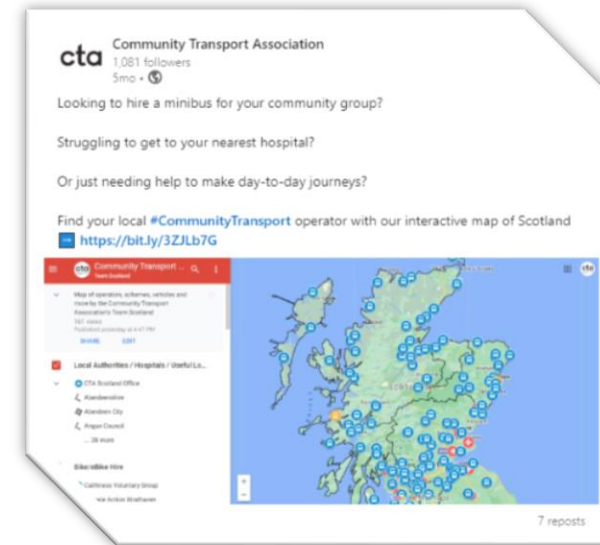
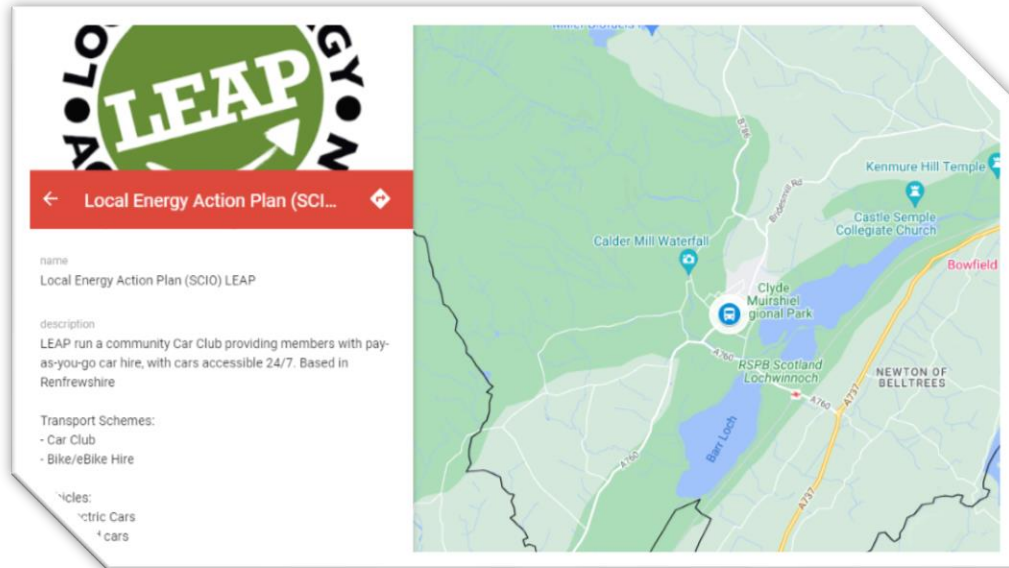
- Map of operators, schemes, vehicles and more by the Community Transport Association's Team Scotland** (13,140 views, Published on 27 July)
- Local Authorities / Useful Locations / Su...**
 - CTA Scotland Conference Venue 2023
 - CTA Scotland Office
 - Aberdeenshire
 - Aberdeen City
 - ... 49 more
- Bike/eBike Hire**
 - Calthness Voluntary Group
 - Climate Action Strathven
 - Galloway Community Transport
 - Glasgow Kelvin College
 - ... 6 more

This screenshot shows the website for 'Badenoch and Strathspey Community Connections'. It features a map of the region with a location pin and a sidebar with the following information:

- name:** Badenoch and Strathspey Community Connections
- description:** Charity and company limited by guarantee providing rural community transport services in and around the Badenoch and Strathspey area of the Scottish Highlands
- Transport schemes:**
 - Volunteer car scheme
 - Community Bus Service
 - Dial-a-ride/door-to-door/DRT
 - Day Hopper/Out & About Bus/Day Trips to vehicle hire (with driver)
 - Non-prescription/shopping collection
 - Motor & Wheelchair Loan Service

This is a detailed map of Edinburgh, Scotland, showing various transport service locations marked with blue pins. The map includes labels for several areas and districts, such as Leith, Blackford, Danderhall, and Dalry.

Community Transport Map of Scotland



Eastern Western
Motor Group



Introduction to CT Programme



900+

Community Transport vehicles



78%

are charities



69%

want to expand

Introduction to Community Transport: Part 1

1. What is Community Transport?

- ✓ Defining CT
- ✓ Examples & case studies
- ✓ Benefits & opportunities
- ✓ Challenges (and things to think about...)

2. Who are CTA? And how can we help?

- ✓ Our role
- ✓ Our services & impact

3. Any thoughts, reflections or questions?

Introduction to Community Transport: Part 2

1. Background

- ✓ Transport Act 1985
- ✓ Section 10b, 19 and 22 Permits
- ✓ What is hire and reward and why does it matter?
- ✓ Related organisations



2. First steps!

- ✓ Insurance
- ✓ Safety and Accessibility
- ✓ MiDAS Training
- ✓ Vehicle Maintenance
- ✓ Find a local CT provider!



Thank you

lara.henderson@ctauk.org

